

## Colour LCD & Electronic Control Module



### Introduction

The E-Plex 500CCM series combines master programmer and controller functionality with a colour touch screen interface, producing a singular, robust display and control solution for any E-Plex System. Dynamic touch screen graphics and static touch overlays give you the ability to provide a unique appearance while maintaining a constant interface.

The 500CCM is compatible with existing E-Plex modules and provides advanced system status and configuration capabilities. Combining the 500CCM with other AC distribution, DC distribution, digital I/O, sensing, user interfaces and system interface modules allows you to configure a system to meet your specific needs.

### Key Features

- Helm mountable.
- 7" diagonal colour LCD touch screen with transmissive display.
- 480 x 234 screen resolution, 16-bit true colour.
- 256KB of onboard memory including a master record of configuration data.
- Rear USB service port.
- Custom touch screen graphic design and layout created within E-Logic software.
- Custom dynamic and static graphics provided via colour touch screen and touch overlay areas.
- Landscape & Portrait Orientation Options.
- LEN capacity 12V - 100, 24V - 200.

### Design Specifications

- Shock: (non-operating) Half sine wave, 80G, 11ms 3 times shock of each six faces.
- Vibration: Tested to Lloyds test spec #1 section 12.
- Moisture resistance: IP40.
- PCB characteristics: UL94V-0.

## Electrical Specifications

Description	Minimum	Nominal	Maximum
Operating Voltage	9 VDC	12 / 24 VDC	32 VDC
Operating Current, no E-Plex loads	400 mA @ 32VDC	—	900 mA @ 9VDC
E-Plex Output Current	—	—	1.5 A

## Physical Specifications

LCD Brightness	350 cd / m <sup>2</sup>
Real-Time Clock Battery Life	20,000 hours typical
LCD Horizontal Viewing Angle	-60 / 60
LCD Vertical Viewing Angle	-30 / 60
Front Bezel	UL 94 V-0, approved molded ABS
Back Cover	UL 94 V-0, approved molded ABS
Operating Temperature	-20°C to 50°C
Storage Temperature	-30°C to 85°C
Operating Humidity	5% to 100%
Weight	680 grams
Recommended Wire Specification for E-Plex Twisted Pair <sup>1</sup>	16 AWG (1.3 mm) - Unshielded, twisted pair General purpose: Belden 1035 A - Non-tinned Marine: Belden 9410 - Tinned

## Wiring Specifications

Terminal Connector Specifications	Tin-plated male 0.250" quick-connect tabs
Mating Connector Specification	0.250" female spade terminal

## Wiring Specifications

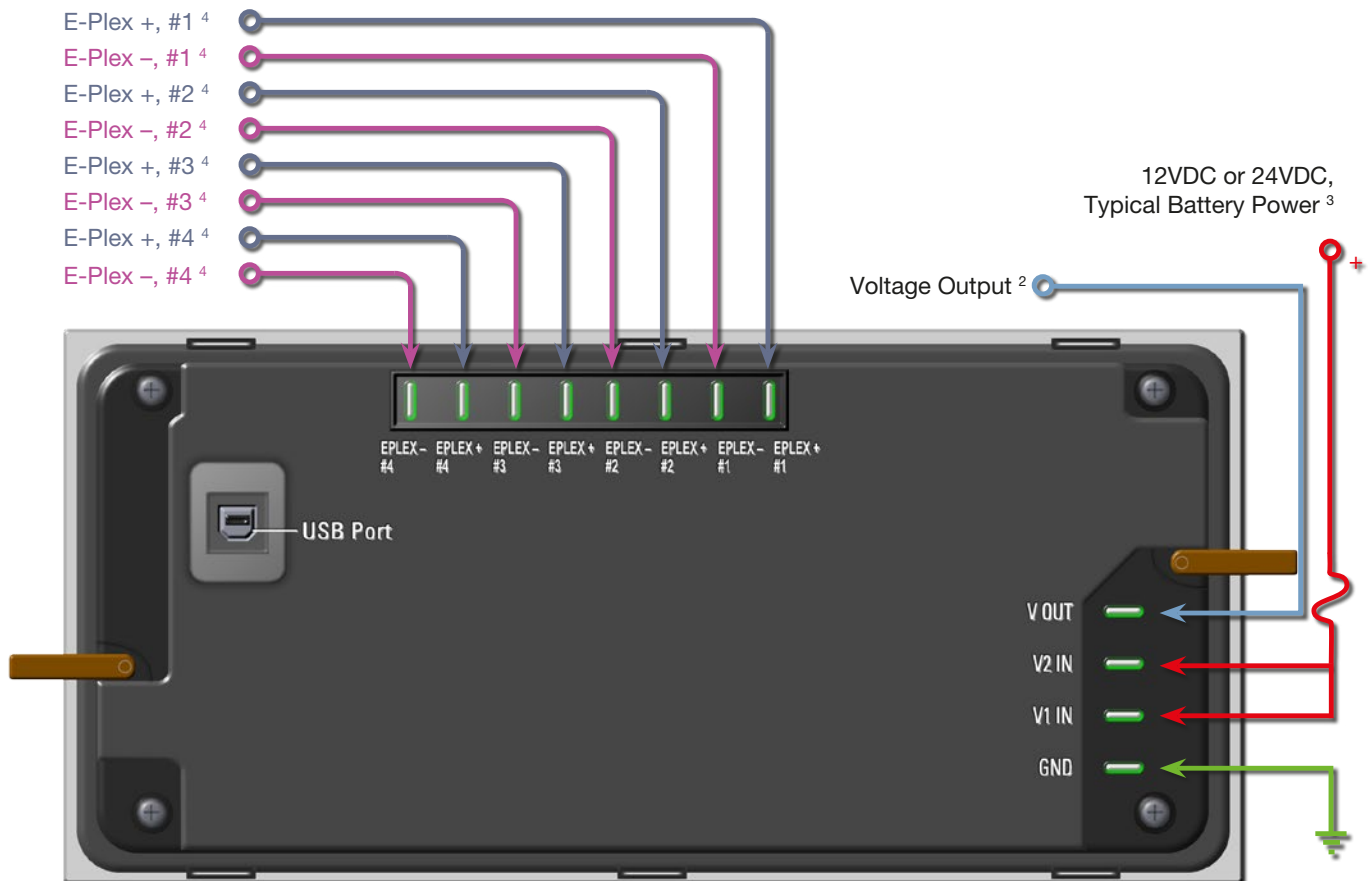
A rectangular hole the size of the keep out area (labeled on the dimensional drawings) must be cut from mounting surface. The keep out area is 9.75" x 4.32". The depth of the module is approximately 1.325". Please allow sufficient room for all wires connected to the clock as well.

## Mounting Instructions

Hand tighten mounting screws until snug, torque should not exceed 10 in-lbs.

NOTE: 1. Unrestricted topology: Star, Tree, Daisy Chain configurations all valid.

## Typical Wiring Diagram



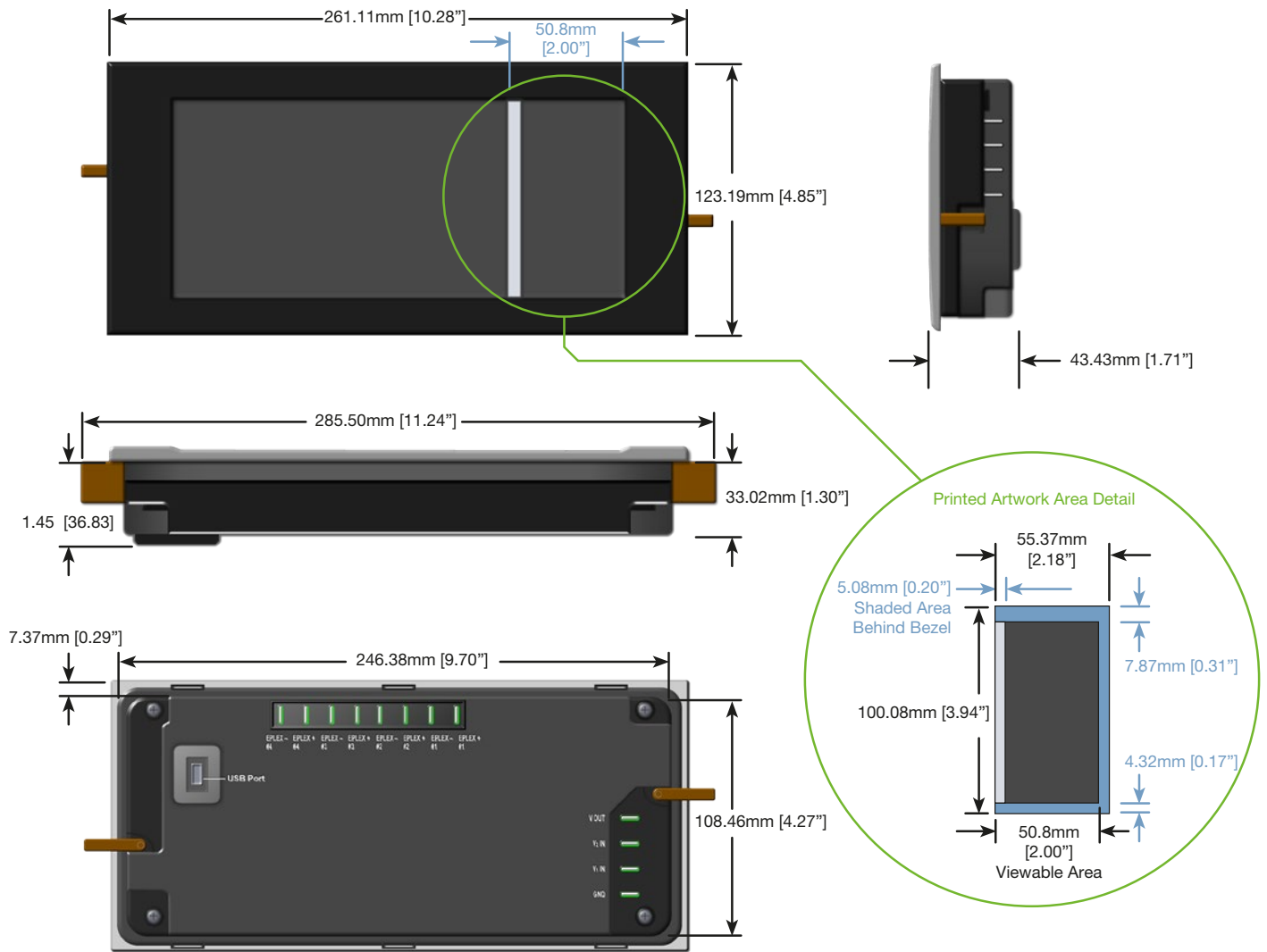
## Important!

An internal jumper sets the E-Plex bus powering option. For 12V operation, select J15 jumper for a maximum LEN capacity of 100. For 24V operation, select J14 jumper for a maximum LEN capacity of 200.

### NOTE:

2. V OUT pin is a  $\leq 1$  amp current DC output.
3. User must install fuse or breaker to protect the circuit, rated for 5 amps or less.
4. 1.5A max total for all 4 data connections.

## Dimensional Diagram



Recommended Hole Cutout: 247.65mm x 109.22mm [9.75" x 4.3"]

## Ordering Information

Description	E-Plex Part Number
500CCM Series - Colour LCD & Electronic Control Module	EP-CLOCK-500CCM



52 – 54 Riverside, Sir Thomas Longley Road, Medway City Estate, Rochester, Kent ME2 4DP  
tel: +44 (0)1634 711622 fax: +44 (0)1634 290773

email: [sales@e-plex.co](mailto:sales@e-plex.co)  
web: [www.e-plex.co](http://www.e-plex.co)

Important Notice: E-Plex Ltd. (E-Plex) reserves the right to make changes to or discontinue any product or service identified in this publication without notice. E-Plex advises its customers to obtain the latest version of the relevant information to verify, before placing any orders, that the information being relied upon is current. E-Plex assumes no responsibility for infringement of patents or rights of others based on E-Plex applications assistance or product specifications since E-Plex does not possess full access concerning the use or application of customers' products. E-Plex also assumes no responsibility for customers' product designs.